

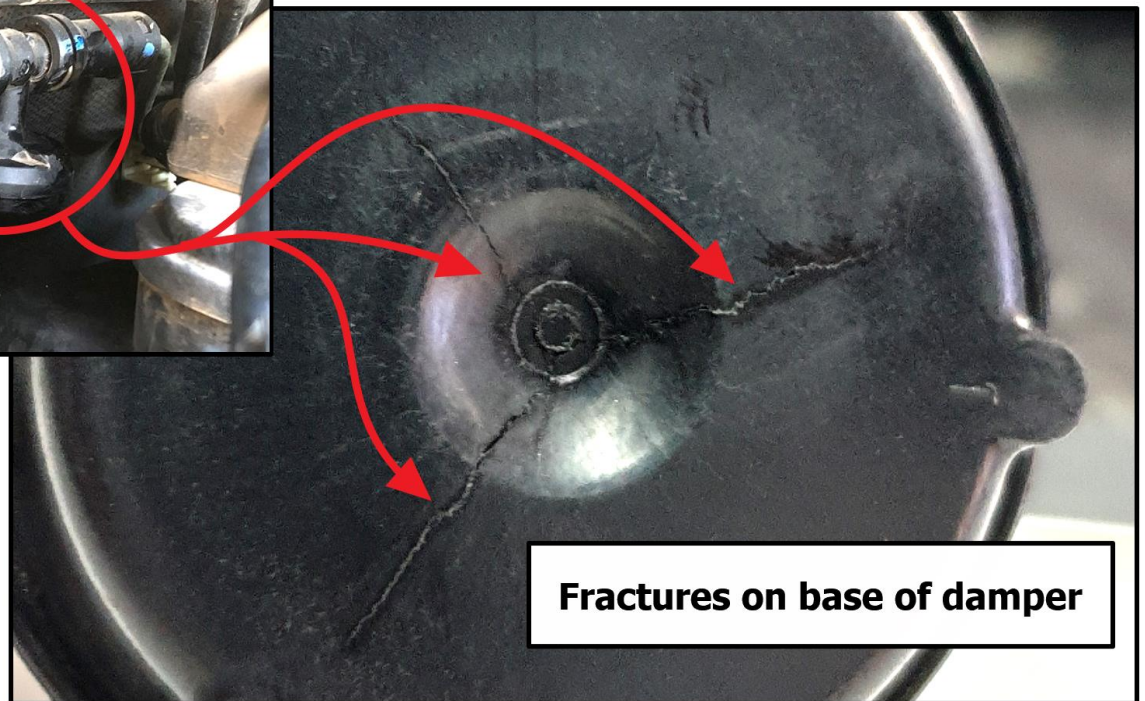
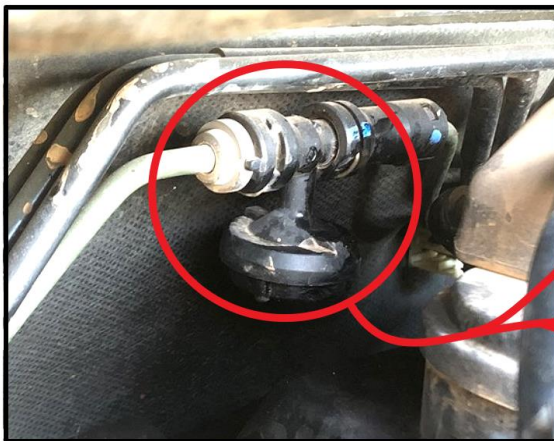
Notice Sheet 13

Ford Ranger/
Mazda BT50
Clutch Damper

Important Information

The hydraulic clutch damper located on the firewall (circled in the image below) can perish over time and close inspection of the damper is required at the time of clutch fitment.

Failure to identify or replace faulty clutch damper may result in loss of pedal pressure and/or difficult gear selection.



Fractures on base of damper